

The Difference on the Formal Expression of Basic Design by Personality Type D-I-S-C

**Ahn, Cheol Hong**

Seoul National University Of Technology

**Woo, Heung Ryong**

Seoul National University Of Technology

## 1. Introduction

- 1.1. Purpose and Background
- 1.2. Contents and Method

## 2. Character type Investigation for The Formal Expression of Basic Design Elevation

- 2.1. Phantasma in the Formal Expression of Basic
- 2.2. Phantasma Destination in the Formal Expression of Basic
- 2.3. Similarity, Antithesis, Approximation

## 3. Investigation about Personality

- 3.1. Personality Type for the Formal Expression of Basic
- 3.2. Relation of Phantasma Destination and Personality Type

## 4. Program Composition for Basis Design Education

- 4.1. Basis Design Educational Programs Composition
- 4.2. Subject Composition for Basis Design Education

## 5. Experiment and Analysis

- 5.1. Analysis Personality Type about Expression
- 5.2. Expression Analysis by Personality Type
- 5.3. Synthesis

## 6. Result

### (Abstract)

This Study investigated about personality type and theory and experiment and analyzed assignment in basis design class. First, sorted personality of students by D-I-S-C type and present and express subject. Subject is divided by design principle and design element and kinetic art and Stylization. Explained objective and concept before present subject. And showed data and image through beam project. Assignments classify by type and analyze and discussed synthetically. Conjectured that there is part that students can express or want to express assignment at discussion. As it were, type "D" expressed active and soft thing in ①Line, Shape/Volume ③Illusion of Design Element and ①Abstract Form of Analog Kinetic Art and Digital Kinetic Art. Specially, offered good expression in ③Illusion of design Element and ①Abstract Form of Analog Kinetic Art

Type "I" displayed prominence in ①Line, Shape/Volume ④Color/Value of Design Element and ①Abstract Form of Analog Kinetic Art and Digital Kinetic Art. Specially, offered good expression from Design Element's ④ Color/Value part.

Type "S" expressed good thing in ①Unity, Emphasis/Focal Point ②Scale/Proportion, Balance of Design Principle and ②Texture ③Illusion ④Color /Value of design Element and Analog Kinetic Art.

Type "C" expressed good thing in ①Unity Emphasis Focal Point ②Scale Proportion of Design Principle and ① Line Shape Volume ②Texture Design Element and ①Observation, 4 step Stylization of Stylization. And any rest expressed banally.

Hereafter, in subject analysis contents Basic Design program that is effective along with existent Basic Design contents form present be expected to.

**Keyword:** Phantasma, Basic Design, Design Principle, Design Element, Personality Type D-I-S-C

# 1. Introduction

## 1.1. Purpose and Background

To extract specific development system about education contents, base study is progressing and By link to emphasize expansion of various data by this and basis. This study analyzed character type about expression person's mind tendency on the basis of substance that was proceeded at basis design time.

This is purposeful to recognize creation action about character type. Background is as following, If grasp expression person's personality difference through contents components of basis design studying. It is construction that may conclude substantiality of basis flag and original conception in purpose originally of design.

## 1.2. Contents and Method

This research is contents that recognize how action by each character type is expressed through result if expression person does creation expression action. and Method was spread as following.

First, place Tass which is necessary in this study through scientific, theoretical investigation about human inclination searched relation about theory and character type.

Second, decided bassinets constituent(point, line, Surface) correspond to basis modeling and Decided subject correspond to Phantasma target (characteristic sense, common sense)

Third, distinguished expression person's type to use Ego-test and Presented necessary subject and general principle to audio-visual materials on subject expression. the other, Arranged result by each type after propose and express controlling power about subject to these.

## 2. Character type investigation for the Formal Expression of Basic Design elevation

Like speech of Howard Gardner "Because people are not born equally, intelligence differs all." So that discussion about intelligence and initiative folds as part of study in hereafter do. Because this two includes creation of troubleshooting and things. It is because that speak that a person is creative is meaning about the person's certain one area or discipline or a technology. Therefore, intelligence and initiative(or creative) can say that have sense of distance. Human's initiative(or creative) is not simple social product but it is active and direct formation process in life everyday may be result. Because when the Internet forms new culture and makes new paradigm on present society, Initiative(or creative) is concerned as is already most sensitive and deep, and exerts influence, and is because can express. This may speak that it is usual, and intimate word about elevation for the Formal Expression of Basic Design. Therefore, modeling power can speak that it is that can express human's inner mind form borrowing target's external form. In other words, can be analyzed that have observable visual form and expresses creative human's earth of art through this.

### 2.1. Phantasma in the Formal Expression of Basic

Reason that plate Tass yam is taken in this research That plate Tass in modeling power forms draft of modeling shape Reappear typical characteristic of a person, in specific sensual topology Reflecting objective actual rule awareness and that have phenomenon do can. Look at a target and property of those by a picture on petal so process and It is very similar to miss sense datums that is felt a destination and gets by phantasma in mind. It is here advance within human named Phansma or thing such as picture. This is past a lot of experience that do phantasia's part or that beam is created by data such as series experience about target first. Past a lot of experience that this does phantasia's part or first beam is created by data such as series experience about target.

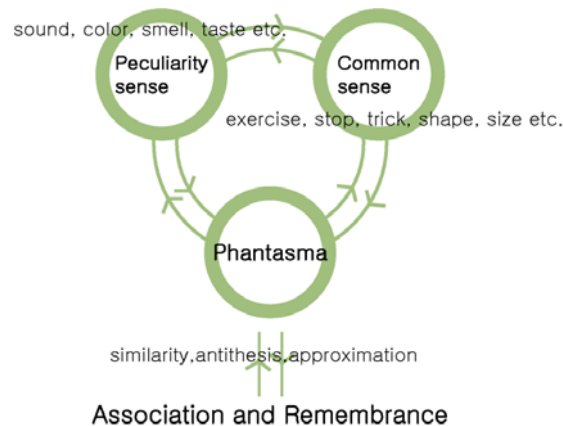
Phansma can not make without phantasia, and reason data's that can command expression if there is no Phansma can not bring. That is, that can not command any modeling horse. Because phantasia includes sensual function and intellectual function and is included in sensitivity in a broad sense. Therefore, phantasia may puts great many Phansma to equal space time and extracts common thing here and forms transcendental. Because all Phansmas can see that is discursive and sensual .

### 2.2. Phantasma Destination in the Formal Expression of Basic

Phantasma destination can take sense for example. These sense is into peculiarity sense and common sense. Peculiarity sense is sound, color, smell, taste etc. Common sense is feels sense destination of exercise, stop, trick, shape, size etc. And Peculiarity sense accompanies meaning called sense ability, and common sense has meaning of common sense and accompany thought and opinion for things.

According to D.K.Modrak, common sense includes function that discriminate difference between judgment and Peculiarity sense destinations about singularity of complex sense destinations. And these senses depend on the body institution and drive association and remembrance.

Association and Remembrance are to be acted through principle of being in difficulty, collating, approximation. and association and remembrance are acted by principle of being in similarity, antithesis, approximation



<Pic.1> Remembrance by Phantasma

### 2.3 . Similarity, Antithesis, Approximation

Similarity are that certain targets know fact that is each other similar. and It is occasion similar Phantasma and other Phantasma as that reproduce that already know universal property of those destinations.

Antithesis is situation that some Phantasma and other Phantasma are each other opposite. If two plate Tass demons are alike, seniority in age will go well, but that have question whether will be thought how if it is direct opposition one occasion several be. Approximation has time and spatial meaning.

## 3. Investigation about Personality

Cattel, R. B. 1955 insisted that it is that do to expect to us that a person will do some action in some given circumstance. Allport personality be based in physiological, psychologic viewpoint and emphasizes hereditarian side. and Allport, G. W. 1961 is as define individual's diagnostic action and casualty that is decided mind of inside and dynamic organization of physical establishment. His insistence can talk that personality means rather than it is what of one something middle who is entirely spiritual anything or new horn that mind and body both act together. In other words, personality can say that mean that is having each person's crystallization tendency of action. but, Mei (May, M . A .) that emphasize social side emphasizes personality that it is integration of property that prescribe individual's role on society and status. Reason is to see that it is social effect how is evaluated giving other person magnetic pole.

But, thing which see that there is concept of personality in place that both integrates that was not overemphasized on which one is proper.

### 3.1. Personality Type for the Formal Expression of Basic

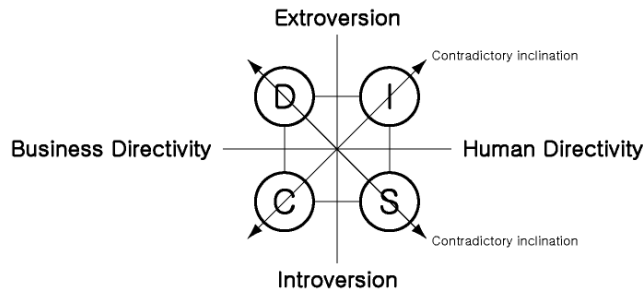
Robert A . Rohm is analyzing personality of people in 4 type. This 4 type mixes stroma of extroversion, introversion, business directivity, human directivity and developed D-I-S-C system. And is explaining personality type and refer concretely about reacted element. Is as following if explain personality type.

D type has contradictory incline with S type. D means Dominant, Driving, Demanding, Determined, Decisive, Doer, Dignify and has first spelling of words. Character type is "Extroversion and business directivity".

I type has contradictory incline with C type. I means Inspirational, Influencing, Inducing, Impressive, interactive, Interesting, Interested in people and indicates first spelling of each word meaning. Character type is "Extroversion and human directivity"

S type is having contradictory incline with D type. S means Supportive, Submissive, Stable, Steady, Sentimental, Shy, Status-quo, Specialist and indicates first spelling of each word meaning. Character type is "Introversion and human directivity".

C type is having contradictory incline with I type. C Cautious, Competent, Calculating, Concerned, Careful, Contemplative Reul mean and teaches first spelling of each word meaning. Character type is "Introversion and business directivity". Therefore, is as following if display this by picture.

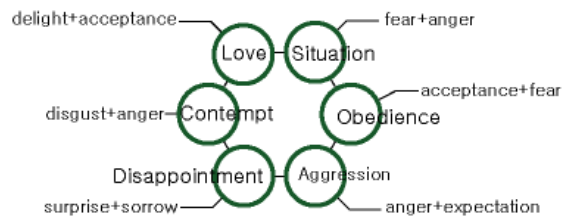


<pic.2> 4 personality type

These inclinations are label method that devise so that American psychologist J.M. Ducey may analyze easily person relationship personality in 1984. This is being based on normalized Ego-Test. and basis is being based on Transactional Analysis that American psychoanalyst Eric Berne 1961 develops. Inclination analysis through TA may be basic inclination pattern in creative action expression upgrade. Only, inclination pattern wishes to search expressed differentia by character type that distinction of that is right and wrong about personality in action and expression about creation is not.

### 3.2. Relation of Phantasma Destination and Personality Type

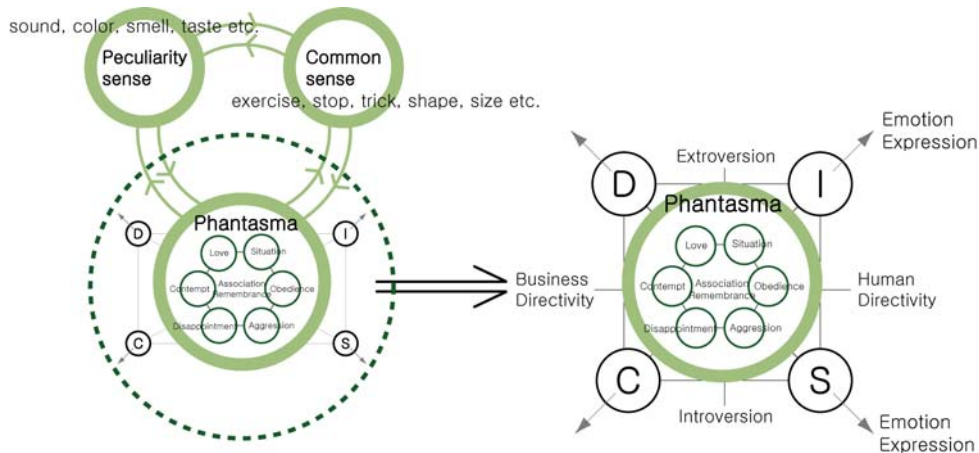
We discuss phantasia that is created by first experience and data about past a lot of experience or destinations. This is doing mainly environment destination. Environment destination is accompanying emotion for character formation and phantasma's destination and two-way relation are conjectured. and think and experiences some particular emotion by analysis and ideas in reply. Pluchik & Kellermen,1989 insists that take some action caused in emotion. They sorted emotion by 8 such as a delight, acceptance, fear, surprise, sorrow, disgust, anger, expectation. They mix 8 emotions variously and ramification emotion reaction and action.



<pic.3> Emotion Reaction and Action

"Emotion" is accompanying many sensitivity that is replaced in sense and perception and Cognition. therefore, when human recognizes a destination or did tangent in some subject that is Surroundings and own experience or existing image etc. uses being in Similarity, antithesis, approximation.

These will associate and flush and will express by language or action that is analyzed through individual's emotion status.



<Pic.4> Association and Remembrance by Phantasma Target

Similarity, antithesis, approximation by Association and Remembrance may act as analogy for expression in modeling conception. Of course, occasion that search solution proposition within info and information or experience that doers are piled not to know by oneself may be. In other words, when nothing exists, suddenly, idea does not come out.

Occasion that become motivation of expression because the most suitable things are mix, and connected among own informations can be. it can be said that is phantasma's accommodation destination in these occasion. These thing can guess in situation of things or topology expression. Because as phantasma discussed that is discursive and sensual in front That may have included consciousness most objectively horsey.

#### 4. Program Composition for Basis Design Education

Program composition 2D process and 2D~3D process consist. This understands basis modeling principle and concept.

With elementary process through composition of modeling element and Various shape attained in plane whit search about expression style. also, it is thing through application.

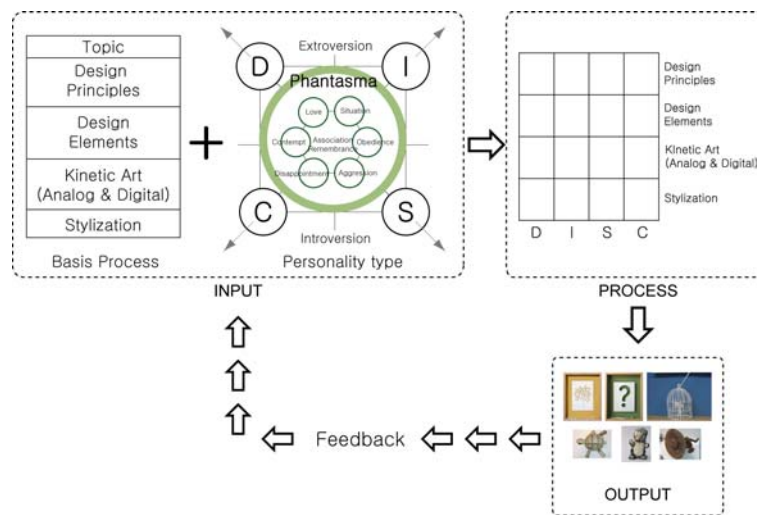
2D	2D~3D
Understand basic modeling principle and fundamental notion in two-dimension plane and is elementary process through modeling element composition.	Understand basic modeling principle and fundamental notion in two-dimension plane, and is elementary process through composition of solid modeling element

<Pic.5> Program Composition for Basis Design Education

#### 4.1. Basis Design Educational Programs Composition

Picture is comprehension and design education program schematic diagram through this of basis modeling element ,

Subject composed 4 contents by Design Principles, Design Elements, Kinetic Art (Analog/Digital), Stylization. and make understood primordial of static/dynamic design modeling and element put on two-dimension plane to newcomers along with personality type



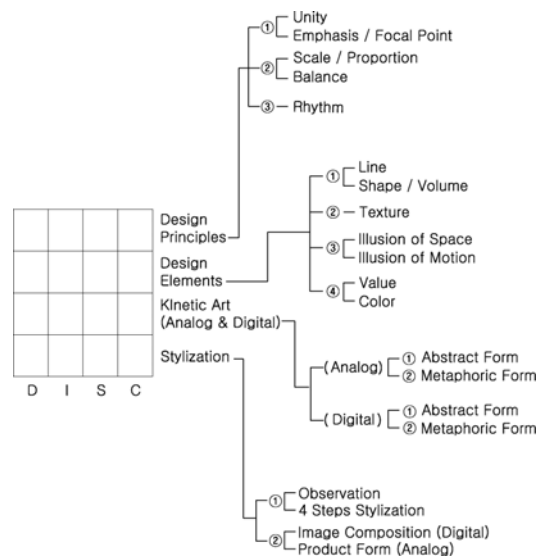
<Pic.6> Basis design educational programs composition

And results (Output) that appear through process investigates whether is some expression, and failure how with primitive objective. Will act by Feedback that argue point that some mode is proper in basis design education according to size of error.

#### 4.2. Subject Composition for Basis Design Education

Below, picture 2D, 2D~3D basis modeling principle and element(form, color, material) to site do. This that overlap composition practice and quality of the material experience, and improves design sense and creation ability objective be. This is overlap composition practice and quality of the material experience and

improves design sense and creation ability objective be. Therefore, may be training course of basis design to develop with practicality or function



<Pic.7> Details subject composition for basis design education

## 5. Experiment and Analysis

Experiment period is from March 7, 2006 to June 13, 2006. Experiment place is Seoul's S National of university Polytechnic. Experiment way is as following. The first, Contributed Ego-Test questionnaire that 60 question is to students and answer on interrogation. Remove question and sorted personality of students.

The second, It is contents about class. Showed data that present subject in each state and need in subject. The next week did manifestation and debate with subject.

The third, Did to film by digital camera, and lodges subject for 14 weeks at end of term. also, utilize and analyzed personality type of distribution chart.

### 5.1. Analysis Personality Type about Expression

Below, it is contents of ego test to analyze type of picture prosperity standing.

<p><b>Type D</b></p> <ul style="list-style-type: none"> <li>1. Assert my opinion.</li> <li>5. Follow suit even if mind has not an inclination that other person decides.</li> <li>9. see well and observe well real 13 . When see things, tend to see critically.</li> <li>17. Is accustomed to life that oneself ideas or action is oppressed.</li> <li>21. "Why", often use terminology "How".</li> <li>25. my moral nature is mild and genuine 29 . Is good at repentance.</li> <li>33. Do not move in horizontal line degree if there is no certain basis.</li> <li>37. Often use terminology that is Gangjojeok of back "Should do it certainly" during conversation.</li> <li>41. Harmonize with relative people and follows well.</li> <li>45. Lay certain plan before execute.</li> <li>49. Respect and keeps well rule or legislation.</li> <li>53. "Sorry .", often say "Forgive".</li> <li>57. When work, treat coil as is clear and cool-headed.</li> </ul>	<p><b>Type I</b></p> <ul style="list-style-type: none"> <li>2. Praise opponent's advantage mainly.</li> <li>6. Can speak my weakness honestly to others.</li> <li>10. Untie immediately was acerbating immediately.</li> <li>14. is soft-boiled and has a warm heart</li> <li>18 . Every business positive .Think sanguinely.</li> <li>22. It is hard that have sat prettily quietly.</li> <li>26. Cleaning, enjoy and cuts housework civil suit day etc..</li> <li>30. Assent easily on others' speech and is good at sympathy (emotion).</li> <li>34. Enjoy sports or entertainment.</li> <li>38. Like service activity.</li> <li>42. People knowing me recognize almost me and trust.</li> <li>46. Dislike rule and enjoys flavor and music.</li> <li>50. Forgive opponent's mistake honestly.</li> <li>54. There are a lot of sides as long as the world stands than weak side (bad).</li> <li>58. Desire to cost thing which want to have is strong</li> </ul>
<p><b>Type S</b></p> <ul style="list-style-type: none"> <li>3. Because progress of work is regular, is efficient.</li> <li>7. Respect tradition or manners.</li> <li>11. Do not express magnetism emotion honestly.</li> <li>15. Talk with someone to get new information.</li> <li>19. Sense of justice is strong.</li> <li>23. Observe well opponent's complexion (brow).</li> <li>27. Put the importance in present pros and cons than the future course.</li> <li>31. Others' mistake or fault is not dragon southward advance well.</li> <li>35. When do what it is, hard to make a decision.</li> <li>39. Can handle work without being influenced in emotion or sentiment.</li> <li>43. Children education should be strict.</li> <li>47. Is passive in personal relations.</li> <li>51. Judge according to fact even if is some work.</li> <li>55. There is (low rating) tendency that drop opponent.</li> <li>59. There are a lot of dependence leads</li> </ul>	<p><b>Type C</b></p> <ul style="list-style-type: none"> <li>4. I act as is comfortable.</li> <li>8. spirit that consider others is strong 12 . Because personality is acquired factor, can change as want.</li> <li>16. Know hesitate learning wanting speech without caring around.</li> <li>20. Is good at courage or encouragement to others.</li> <li>24. A person who equip personality than ability should be fared.</li> <li>28. "With" during conversation, "Really" Done Dung's exclamation interjection often protrudes.</li> <li>32. Help well if look at a trouble person.</li> <li>36. human thinks that it is great presence that have infinite potency 40 . Curiosity is strong.</li> <li>44. When talk, often speak "That is too bad !" "Is hard".</li> <li>48. There are my more work flesh lives to feel that is happy than trouble.</li> <li>52. Tend to act according to superstition (luck) or immediate perception.</li> <li>56. Is generous about people.</li> <li>60. There are a lot of interests about magnetism development or new information collection.</li> </ul>

<table. 1> Ego test interrogation field

If input data that come out through personality test to Transactional Analysis, 243 personality type is appeared in alphabet topology. Through data, may grasp expression person's personality type if character type is analyzed. But, do not insist one type that the testing bench case is given even though type is given. for example, it is not that is gone and increases C inclination unconditionally at the sun that it is C type. In other words, habit of rest D, S, I type exists together. Only, it is intent that C inclination is the strongest among D-I-S-C. and rest inclination should exist certainly so that C habit exists.

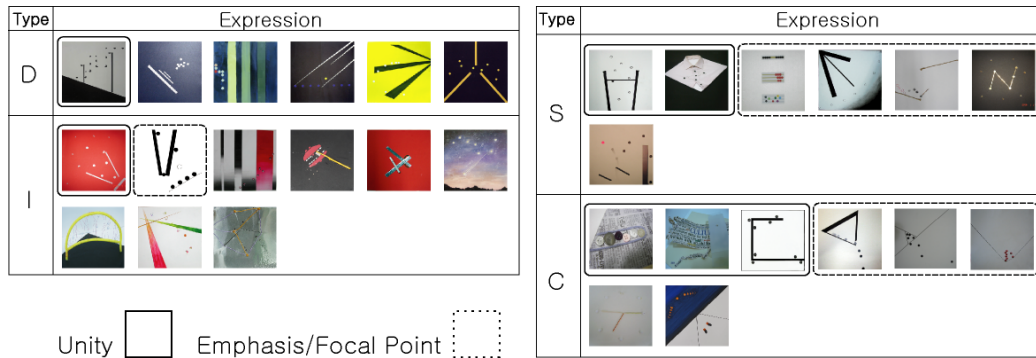
Result that appear using data that D type was expose by 6 types and S type was expose by 7 types. C type is expose by 8 types and I type was expose by most 9 types among 4 types. Therefore, character type of experiment participants was expose by I type> C type> S type> D type

## 5.2 Expression Analysis by Personality Type

Distinguished expression results of experiment subject persons by each personality using D-I-S-C personality type distribution chart.

### 1) Design Principles: ① Unity, Emphasis/Focal Point

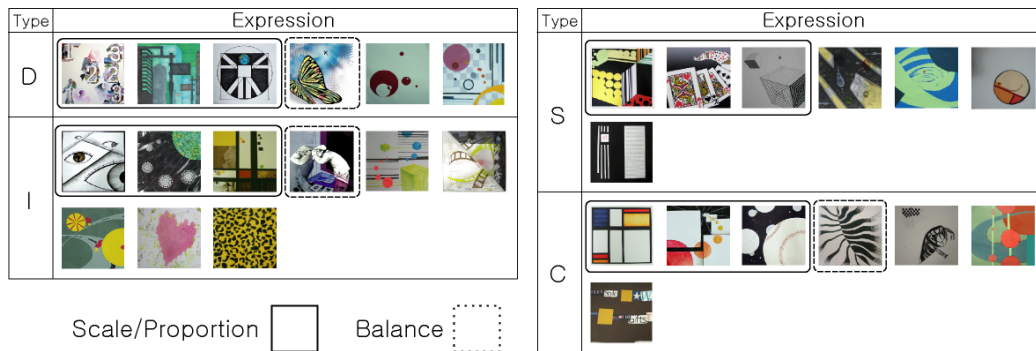
Trouble of expression is looked about subject except some in D type and I type. but, C type and S type are improved less more than D type and I type are seen that is displaying creative of expression. Specially, had a lot of emphasis and presentation for focus in S type.



<Pic.8> Unity, Emphasis/Focal Point

### ② Scale/Proportion, Balance

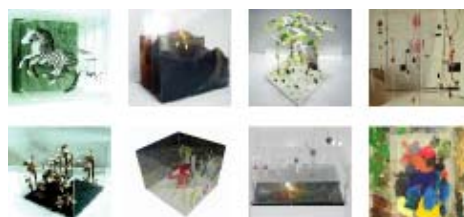
Expression about scale and proportion is shown a little insufficient in D type and me type and C type but S type displays a little expression that is rule good



<Pic.9> Scale/Proportion, Balance

### ③ Rhythm

It is process that compose 3 people to team and expresses deciding subject for rhythm and concept but team work is related with character type, but this research is arguing expression by inclination. Therefore, investigation about team work and analysis reserved in process hereafter.

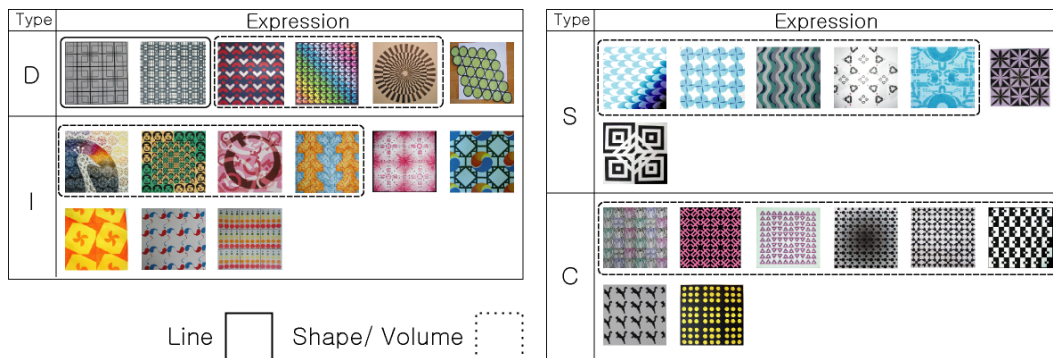


<Pic.10> Rhythm



2) Design Element: ① Line, Shape/ Volume

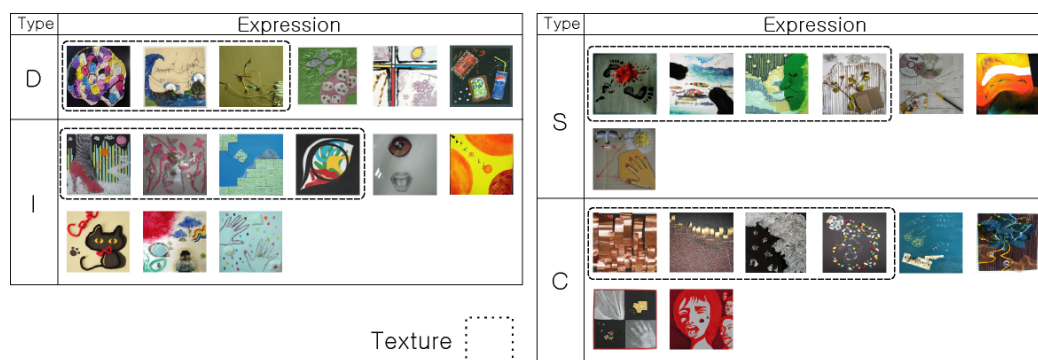
Expressed laying stress on D-I-S-C type total form/volume element on the whole. Specially, is seen that is expressed most in S type and C type. and occasion that is expressed in element of line from D type of some is seen.



<Pic.11> Line, Shape/ Volume

② Texture

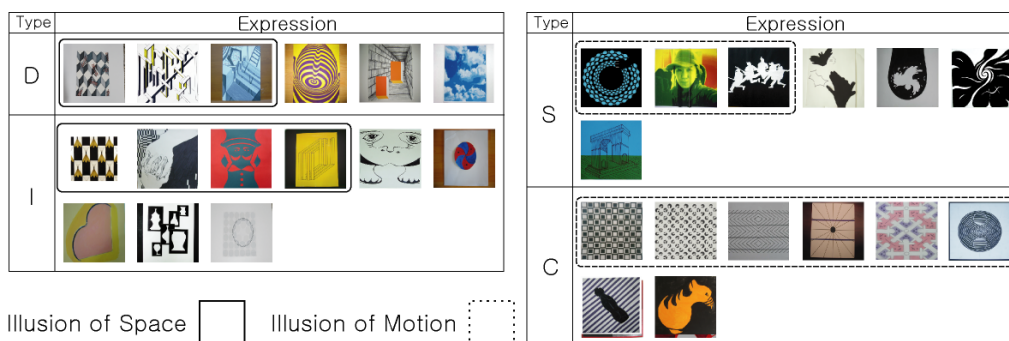
S type, C type and I type use various material and various power of expression was seen. First, C type offered effective expression through hard site(copper, aluminum and so on). Expressed in S type through junk material (scrubber, pieces of broken glass, button, imitation flower , personal ornaments etc.) of thread life. And expressed in D and I type through material of polyurethane, confectionery, aluminum, Chinese drawing paper etc.



<Pic.12> Texture

③ Illusion of Space, Illusion of Motion

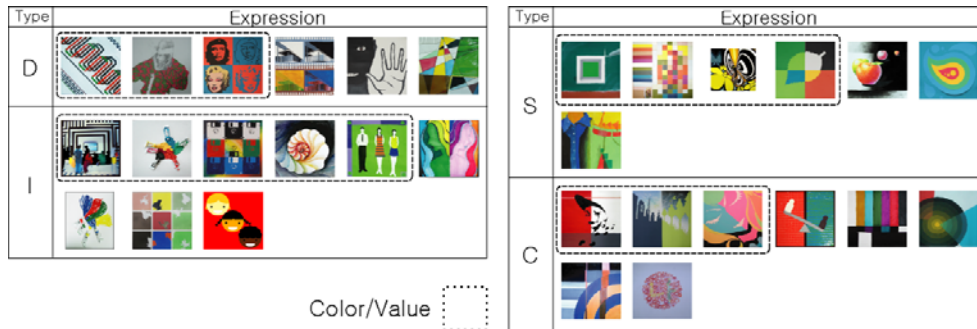
D type and I type were expressed by space putting first in expression about optical illusion. and was expressed laying stress on motion of graphic or gaze mainly in S type. and rest C type expressed exercise optical illusion to use pattern.



<Pic.13> Illusion of Space, Illusion of Motion

④ Color/Value

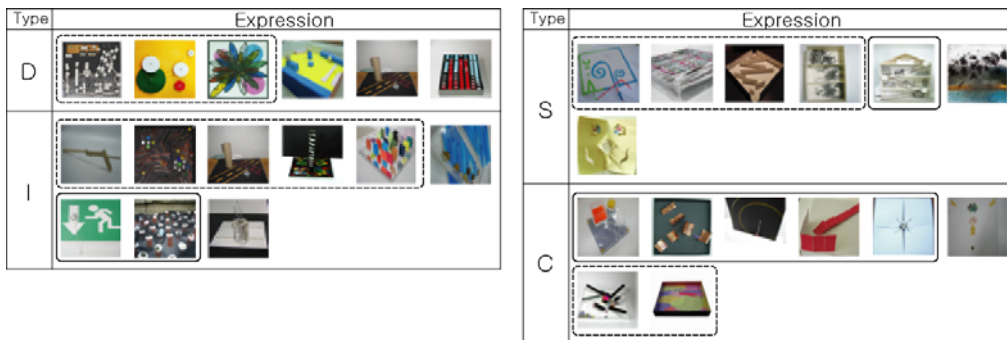
I type is focusing better on exercise persimmon and environment delineation about an animal and plant in color and lightness. The other side, can see that expressed various vocabulary about characteristic of things in S type or ideas and feeling color. D and C types are seen by thing which is faithful on color expression using basic color or image which individual saw additional.



<Pic.14> Color/Value

3) Analog Kinetic Art: ① Abstract Form

Was expressed best in D type and I type and S type. D type expression about Kinetik by analysis putting first which is mechanical (motor, battery, gear topology etc.) express. In I type and S type play(game, a rubber gun, magnet play, dominoes, a toy etc.) by putting first express. In any C type action of physical force or pressure etc.. of force mathematical feeling by putting first express .



<Pic.15> Abstract Form

② Metaphoric Form

It is process that compose 3 people to team and expresses deciding subject for rhythm and concept but team work is related with character type, but this research is arguing expression by inclination. Therefore, investigation about team work and analysis reserved in process hereafter.



<Pic.16> Metaphoric Form(Team Work)

4) Digital Kinetic Art: ①Abstract Form

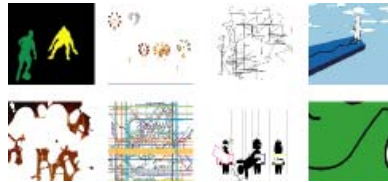
Was expressed best in D type and me type. Became expressed laying stress on symbolic analysis (Symbolic Inspiration) in D type of work, Was expressed to the musical analysis (Beat Inspiration) center that use music or relation associative processor in I type of work. Was full on expression that use basic point/line/page in any C-S type.

Type	Expression	Type	Expression
D		S	
I		C	

<Pic.17> Abstract Form

## ② Metaphoric Form

It is process that compose 3 people to team and expresses deciding subject for rhythm and concept but team work is related with character type, but this research is arguing expression by inclination. Therefore, investigation about team work and analysis reserved in process hereafter.



<Pic.18> Metaphoric Form(Team Work)

## 5) Stylization: ① Observation, 4 Step Stylization

Most active and minute power of expression was seen in I type and S type and C type that stylize observation/4 stages among D-I-S-C type. These expressions are conjectured that was expressed when associate beforehand or grasp that I should draw shape and status of things that is thinking how.

Type	Expression	Type	Expression
D		S	
I		C	

<Pic.19> Observation, 4 Step Stylization

## ② Image Composition, Product Form

It is process that compose 3 people to team and expresses deciding subject for rhythm and concept but team work is related with character type, but this research is arguing expression by inclination. Therefore, investigation about team work and analysis reserved in process hereafter.



<Pic.20> Image Composition, Product Form

### 5.3. Synthesis

This research the self-consciousness, the sensitivity effect by objective, amalgamate with element of form, color, quality of the material etc. in doing basis design education. Connect with individual's personality type with principle of coordination and space reduction etc. with accommodating change, I wished to find expansive basis modeling model.

For upgrade basis contents more education program improve group creativity in interest induction as well as team work because does feedback(Feedback) but is that wish to help . Therefore, basis modeling contents composition is doing conformation, color, material etc. to site. This can speak that create aesthetic effect that can feel through modeling activity while it is work which form sight or spiritual element by figurative thing. Is as following if adjust analysis about D-I-S-C type with high position contents.

D type was seen creative expression in ①Abstract Form of Design Element's ①Line, Shape/Volume and ③ Illusion and Analog Kinetic Art, Digital Kinetic Art's ①Abstract Form. Specially, is seen that display initiative from Design Element's ①Abstract Form part of ③Illusion and Analog Kinetic Art.

I type was seen original expression in ①Abstract Form of Design Element's ①Line, Shape/Volume and ④color/Value, and Analog Kinetic Art, Digital Kinetic Art's ①Abstract Form. Specially, is seen that display initiative expressing with independent personality that is related with Beat in Design Element's ④color/Value and Digital Kinetic Art.

S type was seen creative expression in Design Principle's ①Unity, Emphasis/Focal Point, Scale/Proportion, Balance and Design Element's ②Texture, ③Illusion, ④color/Value, and Analog Kinetic Art's ①Abstract Form. Specially, is seen that initiative through Motion in Design Element.

C type is seen that display initiative in ①Observation, 4 step Stylizations of Design Principle's ①Unity, Emphasis/Focal Point, ②Scale/Proportion, ①Line of Balance and Design Element, Shape/Volume, ②Texture and Stylization. Specially, that these are seen that display initiative that use material in ①Unity, Emphasis ②Texture and Stylization. Is as following if represent each type analysis to a tabular.

Topic	Studio Works	Type				
		D	I	S	C	
Design Principles	① Unity	•	•	○	⊙	
		•	•	●	●	
	② Scale / Proportion	○	○	○	●	
		•	•	•	○	
	③ Rhythm	Teamwork				
Design Elements	① Line	○	•	•	•	
		⊙	⊙	⊙	●	
	② Texture	○	○	⊙	⊙	
		⊙	⊙	•	⊙	
	④ Value / Color	⊙	●	⊙	○	
•		•	⊙	⊙		
Kinetic Art	Analog	① Abstract Form	⊙	●	●	●
		② Metaphoric Form	Teamwork			
	Digital	① Abstract Form	⊙	●	⊙	⊙
		② Metaphoric Form	Teamwork			
Stylization	① Observation 4 Steps Stylization	⊙	○	○	⊙	
	② Image Composition Digital Product Form Analog	Teamwork				

● Very high ⊙ High ○ Weak • Very weak

<table. 2> D-I-S-C type of modeling expression about subject achievement by contents

Validity of D-I-S-C analysis that can see motion that hide in all form genres if see things being based to modeling principle judge. This may grasp correlation between forms and spaces, and make variation of more various conformation. Also, is conjectured that may present various and new contents for various notation about basis modeling and expression groping.

Will have to have ability about expression through making to paint fostering modeling function. Of course,

will have to have emotional and sensitive ability with free expression that is correct in magnetism ability. Also, have experience that widen ambience through modeling activity, chroma, modeling sense of back and uses tool with rationality and Expression material of living environment, will have to rear ability that can dominate material for expression.

## 6. Result

Basis modeling education may be process to understand to basic design principle and concept and ripens through composition of modeling element and does creativity design. In other words, promote synthetic, ingenious thought that help ultimate meaning Questel and value creation to design and may have to intend intelligence and harmony. These require subjects following hereafter for an experiment and various and specific contents about creativity expression.

First. By level, subject, need comparative analysis and research and development through various action learning to do course of study design for initiative.

Second. Need analysis about gradual by process and level by studying diversification of original development process about basis education contents and technique. This expands creative application faculty and application and is expected that systematic development of design basis education can be achieved.

## Bibliography

- D. K. Modrak.. Aristotle the power of Perception, The Univ of Chicago Press. 1987.
- Robert Pluchik, Henry Kellermen (1998), Emotion; Theory, Research and Experience(Vol. 4, The Measurement of Emotion), Academic Press Ic., USA.
- Robert A. roam, positive pAersonality profile analysis, Korean Internet service, 2002 .
- Jang Yeong Lan, Aristotle's epistemology, Seogwangsa, 2000.
- Ahn Beom Hui, personality psychology, Hauchulpansa, 2000.
- Howard Gardner, Muryongrin, multiplex intelligence, Gimyeongsa, 2001.
- Choe Jeong Hun, comprehension of human action, beomousa, 1999 .
- Edeumunteu Huseol, lee jong hun, experience and judgment, Mineumsa, 1997 .
- Sin Myeong Hui, mind of earth's crust, Hagzisa, 1995 .
- Gang Jae Ryun, thinking and action, ilsinsa, 1996 .
- Joun Won Sug, human's siblings, education technography, 2001.
- Woo Heung Hyong, Jin Seon Tae, Endless idea conception, Changjisa, 2004.
- Gwonsunhwan, basis Design, haemalgum, 1995 .
- Keril Akenokoli, Gimcheon, comprehension of three dimensions, modeling education, 2002 .
- Ahn Cheol Hong, Woo Heung Ryong, Basis design education contents composition for Basis Design, spring art and science contest, 2005 .